

KEFLAVÍK AIRPORT - Aprons



ÍAV's scope of work was excavation, and filling under the new apron, sand traps, oil separators and foundations of light towers.

Installation above the surface water gutter, sand separator and oil separation and changes in the drainage system, and silt pond.

Adding wells and pipe in the ground, milling and sawing asphalt and concrete and asphalt laying.

Customer

ISAVIA

Project start

April 2015

Primary Designer

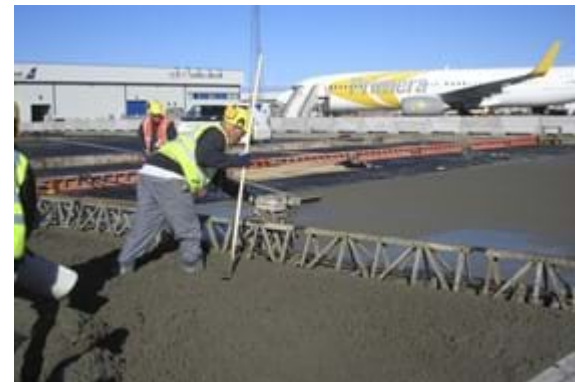
Verkís, Mannvit

Project finish

August 2017

Project supervision

Verkíráðistofa Suðurnesja



Main quantities:

Excavation 105.000 M3
Filling 120 000 M3
Chipping 20.000 M3
Asphalt 120.000 M2
Concrete in apron 8.400 M3
Electricity pipes 16.000 m
Rock crushing 25.000 M3
Drainage Pipes 2.000 m